



# Ars Hotel

# INCLUSIVE HOTEL

**Best Western and L'abilità Onlus**

working together to welcome guests with Autism Spectrum Disorders (ASD).

Best Western Italia and L'abilità Onlus have launched a project dedicated to guests with Autism Spectrum Disorders.

Inclusive Hotel is the name of the initiative and it aims to guarantee an **absolutely positive** stay in the hotel to people with **Autism Spectrum Disorders**, both children and adults together with their families and their caregivers.

This guide is dedicated to those that want to **start travelling again**.

The **services** and **strategies** listed in the guide are helpful in organising the trip and ensure a positive and welcoming experience in the hotel, guaranteeing a sense of **wellness** and **inclusion**.

To supplement the information provided **Augmentative and Alternative Communication Tables** on the hotel itself and on the destination can be found in the dedicated rooms.

**We wish you a pleasant stay.**

## General Information

The **Best Western Ars Hotel** is located in **Rome** in **Via Monte Altissimo 20/24**. The hotel staff has been **trained** and is **aware** of the characteristics of people with **autism spectrum disorders**, of their special needs, and knows how to make the hotel **fully inclusive**.

**Federica Pelosi** is responsible for the Inclusive Hotel project at Best Western Ars Hotel.

You can contact her by e-mail at [info@arshotel.com](mailto:info@arshotel.com) or by phone on +39 0687180200.

**Do not hesitate to contact her:**

- for more information
- to book a room that is adequate to the needs of a person with ASD
- to communicate any special needs
- to communicate your time of arrival



## Check-In and Check-Out

The lobby of the **Best Western Ars Hotel** has a sofa. Near the lobby you will find a desk and a bar with chairs and tables. In the lobby there is a small screen with rotating images. It is also possible to access, via 7 steps, a small lounge where there are armchairs and tables. In this area you will find a TV that is turned on at the request of customers, 2 desks, a bookcase, a computer and a printer.

The lobby is quite wide and at peak times **crowding** and **increased waiting times** could induce **sensory overload**.

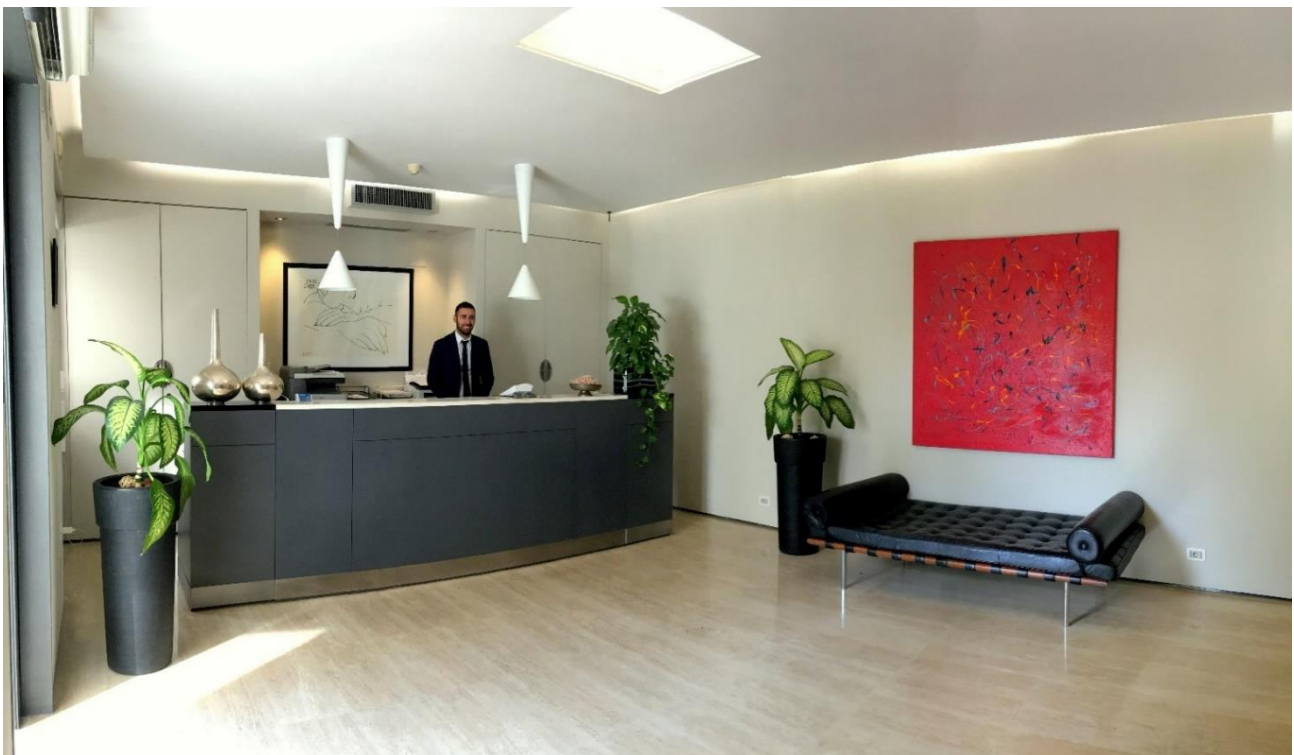
During the day the most crowded times are:

- between 07.30am and 10.00am
- between 05.00pm and 07.30pm

It is there for advisable to check-in and check-out outside these hours.

The hotel:

- is open 24/7
- a private pay and display parking is available (10€ per night) and is subject to availability upon arrival



## Common Areas

💡 No neon lighting.

🎵 Low volume background music.

space	location	characteristics
Bathroom	Floor -2	<ul style="list-style-type: none"><li>• A sink with classic tap</li><li>• A bidet and WC area with classic toilet outlet</li></ul>
	Floor -1	<ul style="list-style-type: none"><li>• Two WC areas with sinks</li><li>• A sink with classic tap</li></ul>
Gym	Floor -1	<ul style="list-style-type: none"><li>• There is a exercise bike, a multi-function machine, a treadmill, a sit-up bench, a mirror, a bedside table with weights, a med ball</li><li>• Bottles of water and towels</li><li>• Low volume music</li></ul>
Lobby	2nd Floor	<ul style="list-style-type: none"><li>• Small screen with rotating images</li><li>• Sofa</li><li>• Monitor with security camera feeds located in a semi-concealed area</li></ul>



## Room

The rooms dedicated to clients with ASD are equipped with features that can help in the case of **atypical sensory reactivity**:

- there are no neon lights but soft lighting
- the room is located far from noise sources
- cleaning products are fragrance free
- air fresheners are not used

The **bedding** is white. A wool blanket is located in the wardrobe and is available to guests.

For specific needs, guests are allowed to bring with them their own **personal items** (**blankets** or **cushions**) and the staff will make the bed.

The room has a tilt-and-turn window facing the Hotel's garden.

The room can be blacked out completely.

The bathroom has a shower.

In the room there is a small minibar with drinks

The room is equipped with kettle and cups, glasses, a book and a pen.

For room service please dial n° 9.

Please contact Reception for any **assistance** you may need.

You will also find **augmentative and alternative communication** material in your room concerning:

- Breakfast menu
- Rules of behaviour
- Communication tables
- An information sheet on Rome



## Breakfast Room

The breakfast room is located on the -1 floor. To get there you have to cross the lobby, the bar and the lounge area, then you have to take the stairs.

**A table will be reserved** for you in an area of the breakfast room free from anything that could induce sensory processing disorder, away from busy passageways.

- Breakfast is served from 7.00 to 11.00am

The times of **increased client influx**, that may lead to a higher risk of sensory overload are:

- from 7.30 to 9.30am

**Background music** is played at low volume.

Guests can bring their **own food and drink** at the table.

If you communicate any **special needs** in advance, the hotel kitchen will do their best to satisfy your requests.

You will also find in your room, the breakfast menu with **augmentative and alternative communication** symbols.



## Hotel Information

The Best Western Ars Hotel is located 500 metres from the underground station "Conca D'Oro" (Line B1), that leads you straight to the city centre (stop "Colosseum") and to the main railway station "Termini". From the Hotel - about 300mt - you find the 90 bus stop (direction Termini Station) and the 60 bus stop, that goes to the city centre (Piazza Venezia).

A private pay-and-display parking is available (10€ per night) and is subject to availability upon arrival.

Close to the Hotel there are a supermarket, a bank, an ice cream shop, a bar and a bakery.

The Reception will be happy to suggest good restaurants in the area.